

Highlights:

- Recognizes Cry1Ab endotoxins
- Results in 10 minutes or less
- Available as 100-strip individual kits, or bulk-packaged strips

Contents of Kit:

- 100 QuickStix Strips packed in two moisture-resistant canisters
- 100 Disposable Tissue Extractors (each consisting of a tube and pestle, with punch cap)
- 4 bottles (16 mL each) of Extraction Buffer

Bulk-purchased kits can be purchased with or without Tissue Extractors, and will include Extraction Buffer Salts instead of dropper bottles of buffer.

Contact Envilab to order bulk-packaged strips.

To prepare the Bulk Extraction Buffer, dissolve one package of Buffer Salts and 2.5 mL of Surfactant into 1 liter of distilled or deionized water and mix until dissolved.



Obtain Leaf Tissue

Catalog Number AS 003 CRLS

Intended Use

The EnviroLogix QuickStix Kit for Cry1Ab Corn Leaf and Seed is designed to extract and detect the presence of the Cry1Ab Bt endotoxins at the levels typically expressed in genetically modified corn plant tissue.

How the Test Works

Corn crops that have been genetically modified with a Bt gene express Bt endotoxins in their tissue. To detect these Cry1Ab proteins with this kit, tissue samples must be extracted and the endotoxins solubilized in the Extraction Buffer provided.

Each QuickStix Strip has an absorbent pad at each end. The protective tape with the arrow indicates the end of the strip to insert into the extraction tube. The sample will travel up the membrane strip and be absorbed into the larger pad at the top of the strip. The portion of the strip between the protective tape and the absorbent pad at the top of the strip is used to view the reactions as described under “Interpreting the Results.”

Sample Preparation

To extract corn leaf tissue:

1. Sandwich a section of leaf tissue between the cap and body of the Disposable Tissue Extractor tube; snap two circular tissue punches by closing the cap. Push the leaf punches down into the tapered bottom of the tube with the pestle. Sample identification should be marked on the tube with a waterproof marker.
2. Insert the pestle into the tube and grind the tissue by rotating the pestle against the sides of the tube with twisting motions. Continue this process for 20 to 30 seconds, or until the leaf tissue is well ground.
3. Uncap the bottle of Extraction Buffer and invert it directly over the Tissue Extractor tube. Carefully squeeze 10 drops (0.25 mL) of Buffer into the tube containing corn leaf, or 15 drops (0.35 mL) of Buffer into tubes containing cotton leaf.
4. Repeat the grinding step to mix tissue with Extraction Buffer. Dispose of the pestle (do not re-use pestles on more than one sample).

To extract corn seed:

1. Crush a single corn kernel (*Suggestion: Use pliers with seed in resealable bag*). Transfer to an extraction tube marked with sample identification.
2. Uncap the bottle of Extraction Buffer and invert it directly over the Tissue Extractor tube. Carefully squeeze 20 drops (0.5 mL) of Buffer into the tube. Alternatively, remove the dropper tip from the bottle and dispense 500 microliters of Buffer into the tube, using a pipette.
3. Close the tube cap securely and shake the tube vigorously for 20 to 30 seconds. Allow the solid material to settle to the bottom of the tube.
4. Repeat the protocol for each sample to be tested, using a new tube and pestle for each. Use caution to prevent sample-to-sample cross-contamination with plant tissue, fluids, or disposables.



Grind tissue



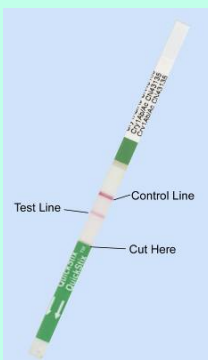
Crush single seed



Extract seed sample



Insert QuickStix



To extract bulk ground corn grain: For best results, please purchase the QuickStix Kit for Cry1Ab/Cry1Ac Bulk Grain, Cat# AS 003 BG.

How to Run the QuickStix Strip Test

1. Allow refrigerated canisters to come to room temperature before opening. Remove the QuickStix Strips to be used. Avoid bending the strips. Reseal the canister immediately.
2. Place the strip into the extraction tube. The sample will travel up the strip. Use a rack to support multiple tubes if needed.
3. Allow the strip to develop for 10 minutes before making final assay interpretations. Positive sample results may become obvious much more quickly.
4. To retain the strip, cut off bottom section of the strip covered by the arrow tape.

Interpreting the Results

Development of the Control Line within 10 minutes indicates that the strip has functioned properly. Any strip that does not develop a Control Line should be discarded and the sample re-tested using another strip.

If the sample extract contained Cry1Ab endotoxin, a second line (Test Line) will develop on the membrane strip between the Control Line and the protective tape, within 10 minutes of sample addition. *The results should be interpreted as positive for Cry1Ab endotoxin expression. Any clearly discernible pink Test Line is considered positive.*

If no Test Line is observed after 10 minutes have elapsed, the results should be interpreted as negative, meaning that the sample contained less Cry1Ab endotoxin than is typically expressed in the tissues of Bt-modified plants.

Warning: A negative result with this test on corn seed or leaf extracts does not necessarily rule out the presence of genetically modified material in the sample.

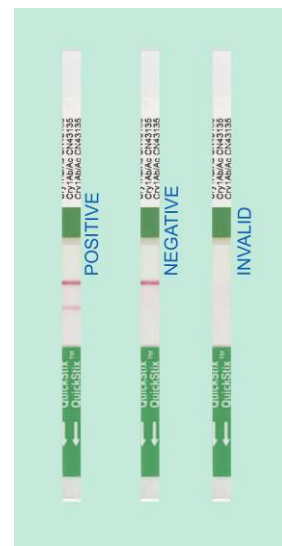
Bt Events in Corn

Bt 11 Event

Bt endotoxin is expressed in seed (grain) and plant tissue.

Bt 176 Event

Bt endotoxin is expressed only in the corn leaf.



Kit Storage

QuickStix can be stored at room temperature, or refrigerated for a longer shelf life. Note the shelf life on the kit box for each storage temperature. The kit may be used in field applications; however, prolonged exposure to high temperatures may adversely affect the test results. Do not open the desiccated canister until ready to use the test strips.



Cross-reactivity

The following materials have been tested with this kit using the protocols specified herein, and have been found to cause no false positive results at the levels indicated (concentrations are in leaf sample):

- Conventional, StarLink[®], LibertyLink[®], and Roundup Ready[®] Corn.
- Conventional and Roundup Ready soybean.
- Conventional and Roundup Ready sugar beet.
- Conventional and Roundup Ready canola.

Precautions and Limitations

- This kit is designed for screening for presence or absence only and is not meant to be quantitative.
- As with all tests, it is recommended that results be confirmed with an alternate method if necessary.
- The assay has been optimized using the protocol and buffer provided in the kit. Deviation from this protocol may invalidate the results of the test.
- The results generated through the proper use of this kit reflect the condition of the working sample directly tested. Extrapolation as to the condition of the originating lot from which the working sample was derived should be based on sound sampling procedures and statistical calculations which address random sampling effects, non-random seed lot sampling effects, and assay system uncertainty. A negative result obtained when properly testing the working sample does not necessarily mean the originating lot is entirely negative for the analyte or protein in question.
- A negative result with this kit does not mean that the sampled tissue has not been otherwise genetically modified.
- Warning: a strong positive result may safely be interpreted in as little as 2 minutes after sample addition. It is not safe, however, to conclude that a sample is negative before a full 10 minutes has elapsed, as a weak positive sample may require the full 10 minutes for a distinct Test Line to appear.
- Protect all components from hot or cold extremes of temperature when not in use. Do not leave in direct sunlight or in vehicle.



**For Technical Support
Contact Us At:**

Envilab GmbH
Cyriakusstraße 27

47839 Krefeld

Tel: (02151) 5671549

Fax: (02151) 5695602

e-mail:
info@envilab-gmbh.de

website:
www.envilab-gmbh.de



LIMITED WARRANTY

EnviroLogix Inc. ("EnviroLogix") warrants the products sold hereunder ("the Products") against defects in materials and workmanship when used in accordance with the applicable instructions for a period not to extend beyond a product's printed expiration date. If the Products do not conform to this Limited Warranty and the customer notifies EnviroLogix in writing of such defects during the warranty period, including an offer by the customer to return the Products to EnviroLogix for evaluation, EnviroLogix will repair or replace, at its option, any product or part thereof that proves defective in materials or workmanship within the warranty period.

ENVIROLOGIX MAKES NO OTHER WARRANTIES, EXPRESSED OR IMPLIED, INCLUDING BUT NOT LIMITED TO ANY IMPLIED WARRANTIES OF MERCHANTABILITY OR FITNESS FOR A PARTICULAR PURPOSE. The warranty provided herein and the data, specifications and descriptions of EnviroLogix products appearing in EnviroLogix published catalogues and product literature are EnviroLogix' sole representations concerning the Products and warranty. No other statements or representations, written or oral, by EnviroLogix' employees, agents or representatives, except written statements signed by a duly authorized officer of EnviroLogix Inc., are authorized; they should not be relied upon by the customer and are not a part of the contract of sale or of this warranty.

EnviroLogix does not warrant against damages or defects arising in shipping or handling, or out of accident or improper or abnormal use of the Products; against defects in products or components not manufactured by EnviroLogix, or against damages resulting from such non-EnviroLogix made products or components. EnviroLogix passes on to customer the warranty it received (if any) from the maker thereof of such non-EnviroLogix made products or components. This warranty also does not apply to Products to which changes or modifications have been made or attempted by persons other than pursuant to written authorization by EnviroLogix.

THIS WARRANTY IS EXCLUSIVE. The sole and exclusive obligation of EnviroLogix shall be to repair or replace the defective Products in the manner and for the period provided above. EnviroLogix shall not have any other obligation with respect to the Products or any part thereof, whether based on contract, tort, strict liability or otherwise. Under no circumstances, whether based on this Limited Warranty or otherwise, shall EnviroLogix be liable for incidental, special, or consequential damages.

This Limited Warranty states the entire obligation of EnviroLogix with respect to the Products. If any part of this Limited Warranty is determined to be void or illegal, the remainder shall remain in full force and effect.

LibertyLink is a trademark of Bayer

StarLink is a trademark of Aventis CropScience

Roundup Ready is a registered trademark of Monsanto Technology LLC

EnviroLogix, the EnviroLogix logo, and QuickStix are trademarks of EnviroLogix Inc.

© EnviroLogix 2006