

Highlights:

- Positive results in 5 minutes or less
- Available as 100-strip individual kits, or in bulk packaging

Contents of Kit:

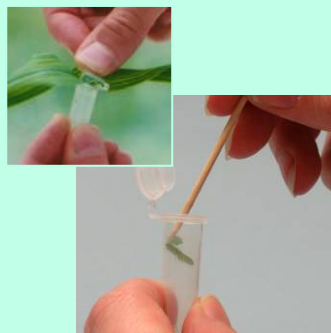
- 100 QuickStix Strips packed in two moisture-resistant canisters
- EB2 Extraction Buffer
- Dropper bottle
- 100 Disposable Tissue Extractor Tubes (tapered snap-cap vials)

Items Not Provided:

- Toothpicks, or equivalent
- Plastic bags

Contact Envilab to order bulk-packaged kits. Bulk kits include EB2 Extraction Buffer Concentrate. To prepare 1 liter, mix 50 mL of 20x Concentrate with 950 mL of distilled or deionized water. Store refrigerated when not in use; allow to come to room temperature before using. Expiration date for prepared buffer is equal to that stated on the 20x container.

Leaf tissue testing:



Obtain leaf tissue, push down

Catalog Number AS 015 LS

Intended Use

The EnviroLogix QuickStix Kit for Cry3Bb Corn Leaf & Seed is a qualitative test designed to extract and detect the presence of Cry3Bb protein in leaf and seed tissue extracts of YieldGard® Rootworm, YieldGard® Plus, YieldGard VT Rootworm/RR2™, and YieldGard VT Triple™ corn hybrids.

How the Test Works

In order to test for the Cry3Bb protein produced in these corn hybrids, the tissue samples must be extracted with Extraction Buffer.

Each QuickStix strip has an absorbent pad at each end. The protective tape with arrows indicates the end of the strip to insert into the sample extract. The sample travels up the membrane strip and is absorbed into the larger pad at the top of the strip. The portion of the strip between the protective tape and the absorbent pad at the top of the strip is used to view the reactions as described under “Interpreting the Results.”

Sample Preparation

Note: If Extraction Buffer has been refrigerated, allow it to warm up to room temperature before preparing samples. Fill the dropper bottle provided with Extraction Buffer.

To extract corn leaf tissue:

1. Use *extreme* caution to prevent sample-to-sample cross-contamination with plant tissues, fluids, or disposables. Repeat the protocol for each sample to be tested using a new tube and toothpick. Avoid touching the pad at the bottom of the strip after handling leaf tissue.
2. Sandwich a section of leaf tissue between the cap and body of the Disposable Tissue Extractor tube. Snap **one** circular punch by closing the cap.
3. Use a toothpick or similar device to push the leaf punch down into the tube. Write the sample identification on the tube with a waterproof marker. Discard toothpick.
4. Holding the dropper bottle vertically, add **10 drops** (~0.5 mL) of Extraction Buffer into the tube containing the leaf punch. Do not touch the dropper tip to the tube or leaf sample.
5. Close the tube cap securely. Shake the tube vigorously for 30 seconds using an up-and-down motion. Tap the solid materials to the bottom of the tube.

To extract corn seed tissue:

1. Use *extreme* caution to prevent sample-to-sample cross-contamination with plant tissues, fluids, or disposables. Repeat the protocol for each sample to be tested, using a new plastic bag and tube for each.
2. Finely crush a single corn seed (*Suggestion: use pliers with seed in resealable plastic bag*). Transfer to a tissue extraction tube marked with sample identification.

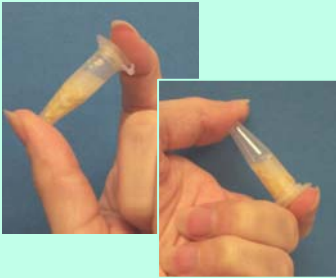


Add Buffer, then shake

Seed tissue testing:



Crush seed



Extract seed sample—
vigorous shaking is vital



Insert QuickStix



Any clearly discernable pink
Test Line is considered positive

3. Holding the dropper bottle vertically, carefully dispense **20 drops** (~1.0 mL) of Extraction Buffer into the tube containing crushed seed. Do not touch the dropper tip to the tube or seed sample.
4. Close the tube cap securely. Shake the tube vigorously for **30 to 60 seconds** using an up-and-down, end-to-end motion, ensuring that all solids (including those in the tapered end of the tube) are wet and forcibly very well mixed throughout the buffer. **This extensive, vigorous shaking will improve extraction and signal intensity.** After shaking step, tap the solid materials to the bottom of the tube. The extract should appear very cloudy.

How to Run the QuickStix Strip Test

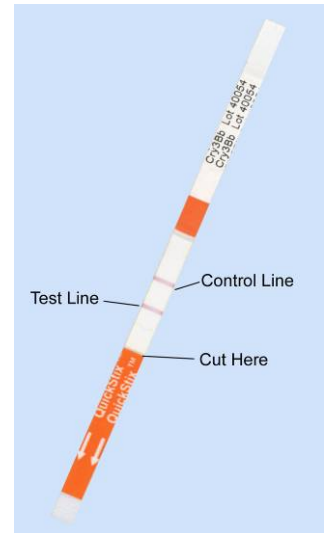
1. Allow refrigerated canisters to come to room temperature before opening. Remove the QuickStix Strips to be used. Avoid bending the strips. Reseal the canister immediately.
2. Place the strip into the extraction tube. The sample will travel up the strip. Use a rack to support multiple tubes if needed.
3. Allow the strip to develop in the extract for 5 minutes before making final assay interpretations. Positive sample results may become obvious much more quickly. Allow the test to run for the full 5 minutes before concluding a sample is negative.
4. To retain the strip, cut off and discard the bottom section of the strip covered by the arrow tape.

Interpreting the Results

Development of the Control Line within 5 minutes indicates that the strip has functioned properly. Any strip that does not develop a Control Line should be discarded and the sample re-tested using another strip.

If the sample extract contains Cry3Bb protein, a second line (Test Line) will develop on the membrane strip between the Control Line and the protective tape within 5 minutes of sample addition. *The results should be interpreted as positive for Cry3Bb protein expression.*

If the extract is from a negative sample, the strip will only develop the Control Line.



Kit Storage

This kit can be stored at room temperature, or refrigerated for a longer shelf life. Please note the shelf life on the kit box for each storage temperature. The kit may be used in field applications; however, prolonged exposure to high temperatures may adversely affect the test results (see “Precautions and Notes”). Do not open the desiccated canister until ready to use the test strips.

Precautions and Notes

- This kit is designed for screening for presence or absence only and is not meant to be quantitative.
- As with all tests, it is recommended that results be confirmed by an alternate method when necessary.



- The assay has been optimized to be used with the protocol provided in the kit. Deviation from this protocol may invalidate the results of the test.
- Protect all components from hot or cold extremes of temperature when not in use. Prolonged exposure to high temperatures may adversely affect the test results. Do not leave in direct sunlight or in vehicle.
- The results generated through the proper use of this kit reflect the condition of the working sample directly tested. Extrapolation as to the condition of the seed lot from which the leaf or seed sample was derived should be based on sound sampling procedures and statistical calculations which address random sampling effects, non-random seed lot sampling effects, and assay system uncertainty. A negative result obtained when properly testing the working sample does not necessarily mean the originating lot is entirely negative for the analyte or protein in question.
- A negative result with this kit does not mean that the sampled tissue has not been otherwise genetically modified.
- Age and condition of leaf tissue sampled can impact the intensity of the result.
- Corn seed should be finely crushed and thoroughly mixed with buffer by extensive, vigorous end-to-end shaking to achieve maximum signal intensity.
- A strong positive result may be safely interpreted in as little as 2 minutes after sample addition. It is not safe, however, to conclude that a sample is negative before a full 5 minutes have elapsed.
- Use extreme caution to prevent sample-to-sample cross-contamination with tissues, fluids, or disposables. Avoid touching the pad at the bottom of the strip after handling leaf tissue. Discard disposables after one use.
- This kit will detect Cry3Bb protein found in multiple corn hybrids including YieldGard Rootworm, YieldGard Plus, YieldGard VT Rootworm/RR2, and YieldGard VT Triple. The test does not necessarily distinguish between these corn hybrids.



**For Technical Support
Contact Us At:**

Envilab GmbH
Cyriakusstraße 27

47839 Krefeld

Tel: (02151) 5671549

Fax: (02151) 5695602

e-mail:
info@envilab-gmbh.de

website:
www.envilab-gmbh.de



LIMITED WARRANTY

EnviroLogix Inc. (“EnviroLogix”) warrants the products sold hereunder (“the Products”) against defects in materials and workmanship when used in accordance with the applicable instructions for a period not to extend beyond a product’s printed expiration date. If the Products do not conform to this Limited Warranty and the customer notifies EnviroLogix in writing of such defects during the warranty period, including an offer by the customer to return the Products to EnviroLogix for evaluation, EnviroLogix will repair or replace, at its option, any product or part thereof that proves defective in materials or workmanship within the warranty period.

NEITHER ENVIROLOGIX NOR MONSANTO MAKES ANY OTHER WARRANTIES, EXPRESSED OR IMPLIED, INCLUDING BUT NOT LIMITED TO ANY IMPLIED WARRANTIES OF MERCHANTABILITY OR FITNESS FOR A PARTICULAR PURPOSE. The warranty provided herein and the data, specifications and descriptions of EnviroLogix products appearing in EnviroLogix published catalogues and product literature are EnviroLogix’ sole representations concerning the Products and warranty. No other statements or representations, written or oral, by EnviroLogix’ employees, agents or representatives, except written statements signed by a duly authorized officer of EnviroLogix Inc., are authorized; they should not be relied upon by the customer and are not a part of the contract of sale or of this warranty.

EnviroLogix does not warrant against damages or defects arising in shipping or handling, or out of accident or improper or abnormal use of the Products; against defects in products or components not manufactured by EnviroLogix, or against damages resulting from such non-EnviroLogix made products or components. EnviroLogix passes on to customer the warranty it received (if any) from the maker thereof of such non-EnviroLogix made products or components. This warranty also does not apply to Products to which changes or modifications have been made or attempted by persons other than pursuant to written authorization by EnviroLogix.

THIS WARRANTY IS EXCLUSIVE. The sole and exclusive obligation of EnviroLogix shall be to repair or replace the defective Products in the manner and for the period provided above. EnviroLogix shall not have any other obligation with respect to the Products or any part thereof, whether based on contract, tort, strict liability or otherwise. Under no circumstances, whether based on this Limited Warranty or otherwise, shall EnviroLogix be liable for incidental, special, or consequential damages.

This Limited Warranty states the entire obligation of EnviroLogix with respect to the Products. If any part of this Limited Warranty is determined to be void or illegal, the remainder shall remain in full force and effect.

*YieldGard® Rootworm, YieldGard® Plus, YieldGard VT Rootworm/RR2™, and YieldGard VT Triple™ are trademarks of Monsanto Technology LLC
EnviroLogix, the EnviroLogix logo, and QuickStix are trademarks of EnviroLogix Inc.*

License

EnviroLogix has developed this kit using proprietary reagents as well as reagents licensed from Monsanto Company.

© EnviroLogix 2007